



PROFESSIONAL LOUDSPEAKERS

XLT500

TWO-WAY TRAPEZOIDAL LOUDSPEAKER WITH 90° X 40° HF HORN

SPECIFICATIONS (See notes 1 and 2)

- Loudspeaker Type:** 2-way, full-range, bass ported
- Operating Range:** 50 Hz - 15 kHz (+/-5dB)
- Power Handling:**
 - 400W continuous, 1000W program, 2000W peak
 - 40 volts RMS, 89 volts momentary peak
- Recommended Power Amp:** 800W to 1200W @ 4 Ohms
- Sensitivity 1W/1m:**
 - 97 dB SPL (63 Hz - 12.5 kHz 1/3 octave bands)
 - 98 dB SPL (250 Hz - 4 kHz speech range)
- Maximum Output:** 123 dB SPL / 130 dB SPL (peak)
- Nominal Impedance (passive):** 4 Ohms
- Nominal -6dB Dispersion:** 90° H x 40° V
- Axial Q / DI:** 18.0 / 12.6, 1 kHz - 16 kHz
- Crossover Frequency:** 2 kHz
- Recommended Signal Processing:** 40 Hz high pass filter

Drivers:

- LF (1) 15"
- HF (1) 1" exit, titanium-free diaphragm

- Driver Protection:** IntelliSense™
Dual 3 color PowerMeter™ LEDs

- Input Connection:** (1) 4 conductor connector
(2) 1/4 inch jacks

Enclosure: Black carpet covered plywood

Enclosure Hardware:

- (2) Steel recessed bar-handles
- (8) Interlocking corner protectors

Mounting / Rigging Provisions:

- (3) 5/16-18 wall/ceiling bracket attachment points
- (3) 5/16-18 threaded inserts
- (1) 1-3/8 in. metal stand socket

Grille: 16 gauge perforated steel, black powder coated

Required Accessories: None

Supplied Accessories: None

Optional Accessories:

- CSSUPKIT:** 2 steel straps with a series of 3/8"/10mm diameter holes for rigging.
- SB5:** 5 ft/35mm o.d. steel mounting pole
- WB1:** 2 steel plate-brackets for wall/ceiling mounting

Dimensions (including corner protectors)

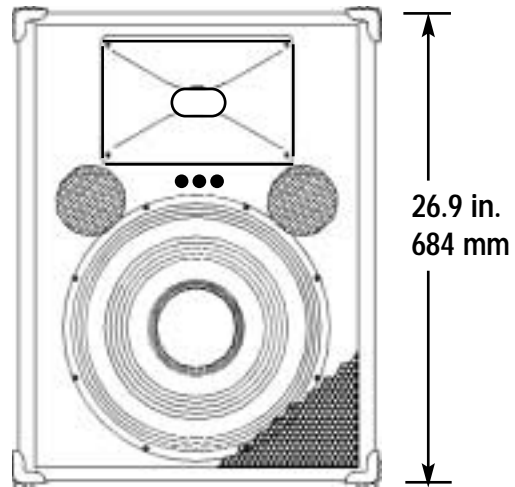
- Height: 26.9 in. / 684 mm
- Width (front): 20.3 in. / 515 mm
- Width (rear): 13.7 in. / 347 mm
- Depth: 18.2 in. / 463 mm

Weight: 50 lb. / 22.7 kg

Shipping Weight: 59 lb. / 26.8 kg

1. Sensitivity: Free field pink noise measurement at 40 feet (12.2m) at 28% power; extrapolated to 1 meter and an input of 2 volts RMS.

2. Watts: All wattage figures are calculated using the rated nominal impedance.



APPLICATIONS:

- Sound Reinforcement / Portable PA
- Clubs / DJ
- Houses of Worship
- Sport Facilities & Health Clubs
- Industrial A/V
- Keyboard Systems
- Rental Systems

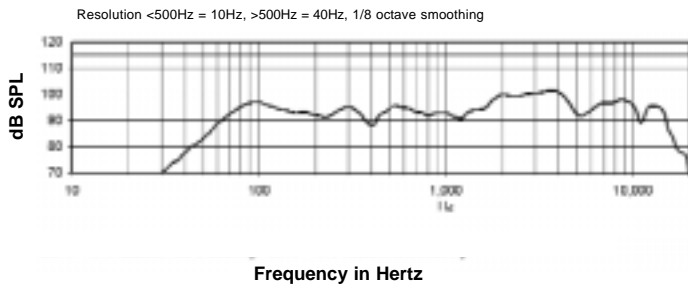
FEATURES:

- Plywood Enclosure
- 1" Exit HF Driver
- 3 Color PowerMeter™ LEDs
- IntelliSense™ Two Stage Solid State Protection Circuit with Front/Rear Indicators
- Trapezoidal Enclosure for Arraying
- Steel Bar-Handles and Input Panel
- Black-Carpeted Exterior
- Bass Enhanced Woofer
- 4 Conductor Connector and 1/4" Inputs

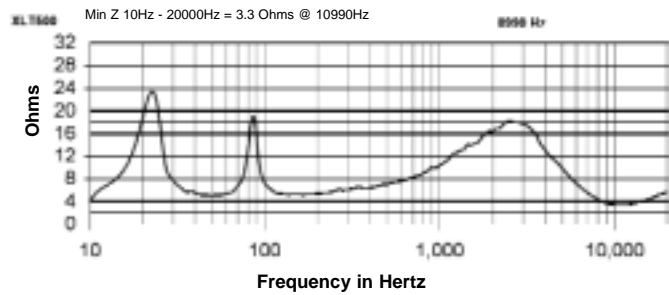
DESCRIPTION

The XLT500 is a versatile 2-way, full-range bass reflex loudspeaker system engineered for multiple uses in club and performance public address. Availability of both captive rigging points and a stand adapter allows this system to be used effectively in both portable and installed situations. The black-carpeted plywood enclosure and black perforated steel grille present an attractive and rugged package. Features a front and rear panel mounted, IntelliSense™ dual 3 color PowerMeter™ LEDs, and protection circuitry. Five year warranty.

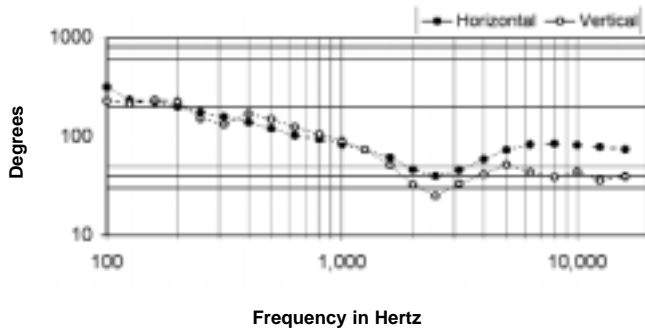
Frequency Response



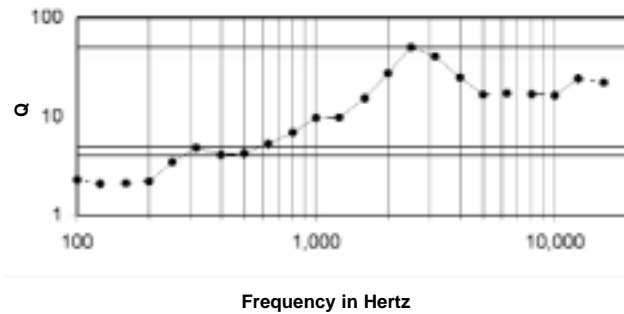
Impedance



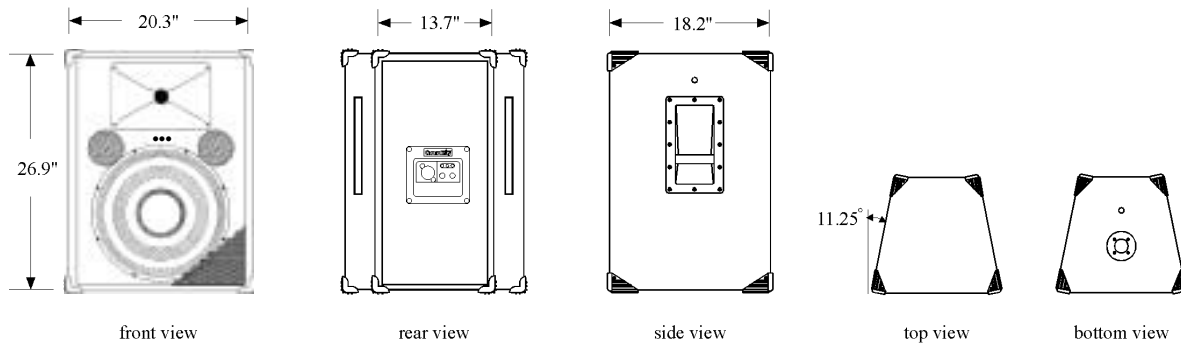
Beamwidth



Axial Q



DIMENSIONS



ARCHITECTS' AND ENGINEERS' SPECIFICATIONS

The loudspeaker system shall be a two-way, full-range bass reflex trapezoidal design with one 15 in. woofer and one 1 in. exit HF driver with a non-metallic diaphragm mounted to a 90° H x 40° V molded horn. Drivers shall be connected to an integral crossover with a crossover frequency of 2 kHz and integral two stage over-current protection circuitry. There shall be one 4 conductor connector, two 1/4" phone jack connectors and dual 3 color Power Meter™ LEDs. The loudspeaker enclosure shall be black carpeted plywood with a 16 gauge perforated steel grille. The system shall have an amplitude response of 50 Hz to 15 kHz (+/- 5 dB), input capability of 40V RMS, 97 dB sensitivity at one meter and 2 V/4 ohms nominal impedance. The nominal dispersion shall be 90° H x 40° V from 1 kHz to 16 kHz. The loudspeaker shall be 26.9 in. (684 mm) H x 20.3 in. (515 mm) W (front) x 13.7 in. (347 mm) W (rear) x 18.2 in. (463 mm) D and weigh 50 lbs (22.7 kg).