

AF CB **CP** CS CV HD HS R SL WE XE XL

**SPECIFICATIONS (See notes 1 and 2)**

**Loudspeaker Type:** 2-way, Full-range, bass ported, mini system  
**Operating Range:** 60 Hz - 20 kHz  
 60 Hz - 20 kHz (+/-5dB)  
**Max Input Ratings:** 200W continuous, 500W Program  
 28 volts RMS, 63 volts momentary peak  
 Transformer taps with 70V option:  
 120 / 60 / 30 / 15 watts

**Recommended Power Amplifier:**  
 420W to 600W @ 4 Ohms

**Sensitivity 1W/1m:**  
 86 dB SPL (63Hz - 20 kHz 1/3 octave bands)  
 85 dB SPL (250 Hz - 4 kHz speech range)

**Maximum Output:** 109 dB SPL / 116 dB SPL (peak)

**Nominal Impedance:** 4 Ohms

**Min Impedance:** 5.4 Ohms @ 170 Hz

**Nominal -6 dB Beamwidth:**  
 90° H (+15° / -13°, 2 kHz - 8 kHz)  
 90° V (+19° / -18°, 2 kHz - 8 kHz)

**Axial Q / DI:**  
 10 / 10, 1kHz - 8 kHz

**Crossover Frequency:** 2 kHz  
**Recommended Signal Processing:** 50 Hz high pass filter

**Drivers:**  
 LF (2) 8" cone, magnetically shielded  
 HF (1) 1" dome, magnetically shielded

**Driver Protection:**  
 PowerSense™ DDP

**Input Connection:**  
 (1) NL4 compatible jack (none with 70V option)  
 (1) 2 terminal barrier strip (5 terminals with 70Voption)

**Controls:** None  
**Enclosure:** 19 mm MDF wood (see options)  
**Enclosure Hardware:** (1) integral handle

**Mounting / Rigging Provisions:**  
 (6) 1/4-20 rigging points  
 (4) 1/4-20 for stand adapter or mounting bracket

**Grille:** 16 gauge perforated steel (see options)

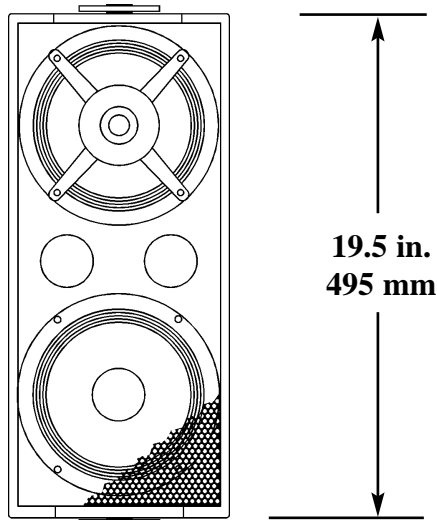
**Required Accessories:** None  
**Supplied Accessories:** (4) Rubber feet  
 (1) Steel yoke bracket

**Optional Accessories:** None  
**Dimensions (without bracket):**  
 Height: 19.5 in. / 496 mm  
 Width (front): 9.7 in. / 247 mm  
 Width (rear): 5.6 in. / 143 mm  
 Depth: 12.3 in. / 314 mm

**Weight:** 24.5 lb. / 11.1 kg  
**Shipping Weight:** 28 lb. / 12.7 kg

**1. Sensitivity:** Free field pink noise measurement at 4 ft. / 1.2m at 25% power; extrapolated to 1 meter and an input of 2VRMS.

**2. Watts:** All wattage figures are calculated using the rated nominal impedance.



**APPLICATIONS:**

- Restaurants, Clubs
- Karaoke Clubs, Health Clubs
- Offices, Classrooms, Meeting Rooms
- A/V Systems, Retail Environments
- Amusement Parks
- Supplementary Coverage for Houses of Worship, Auditoriums, Theatres, Music and Dance Clubs
- Distributed Systems

**FEATURES:**

- Magnetically shielded for A/V
- Low "Q" Dispersion
- Coaxially Mounted HF Driver
- PowerSense™ DDP
- Ultra Compact Trapezoidal Enclosure
- Easy Mounting with Included Yoke

**DESCRIPTION**

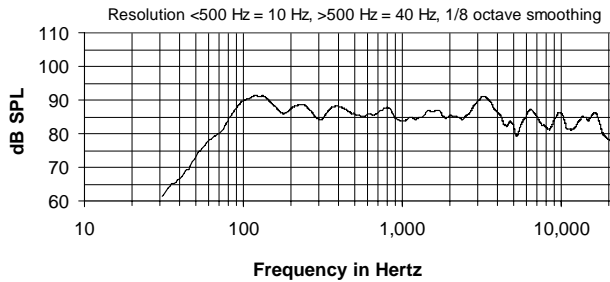
The CPL27 is an ultra-compact, two-way full-range loudspeaker system with two 8 in. LF drivers and one 1 in. dome HF driver coaxially mounted to the upper LF driver. This direct radiating loudspeaker is engineered for systems where high performance, cost-effectiveness and versatility are needed in a small package. The ultra-compact CPL loudspeakers are optimized for background / foreground music systems with enhanced announcement capability. Ultra-compact CPL systems have an integral steel mounting yoke and are available in either a white or black finish. They may be ordered with a 70V option that includes a 120 W transformer with taps at 120 W, 60 W, 30 W, and 15 W. Five year limited warranty.

**OPTIONS:**

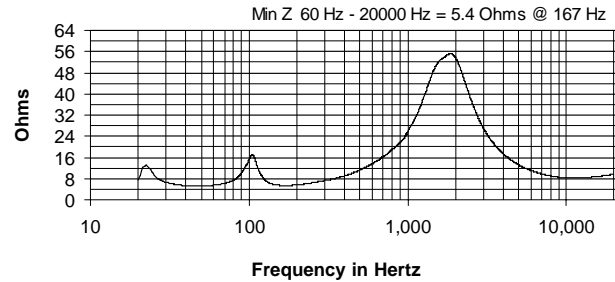
- CPL27-B: Black painted
- CPL27-BT: Black painted / 70V option
- CPL27-W: White painted, white cloth grille covering
- CPL27-WT: White painted / 70V option, white cloth grille covering

AF CB **CP** CS CV HD HS R SL WE XE XL

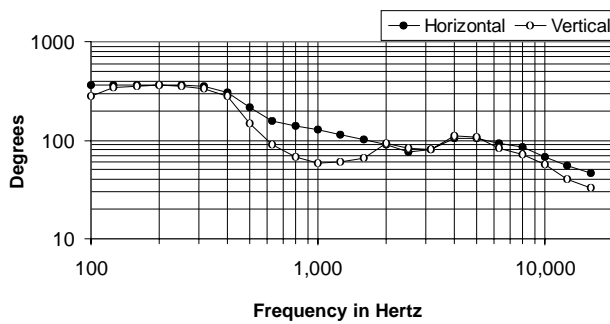
**FREQUENCY RESPONSE**



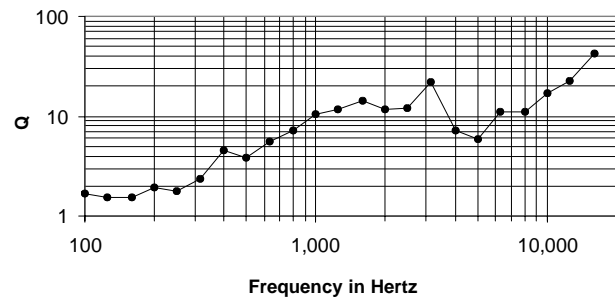
**IMPEDANCE**



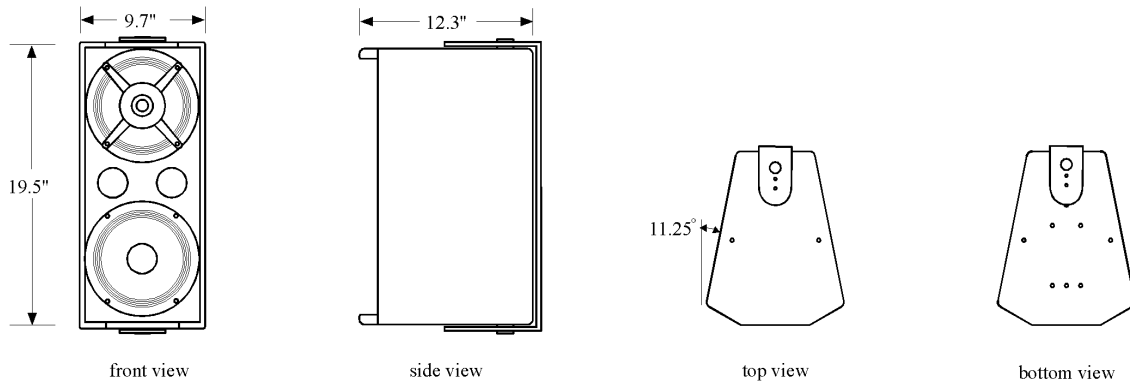
**BEAMWIDTH**



**AXIAL Q**



**DIMENSIONS**



**ARCHITECTS' AND ENGINEERS' SPECIFICATIONS**

The loudspeaker system shall be a two-way, full-range bass reflex trapezoidal design with two 8 in. woofers and one 1 in. exit HF dome driver coaxially mounted to the upper LF speaker. Drivers shall be connected to an integral crossover with a crossover frequency of 2 kHz and integral over-current protection circuitry using high positive current coefficient resistors. There shall be one NL4 compatible [not on 'T' model] and one two-terminal [five-terminal] barrier strip input connectors [and one 70V, 60W transformer]. The loudspeaker enclosure shall be MDF with a 16 gauge perforated steel grille {with a white cloth cover} and finished with black {white} paint. The system shall have an amplitude response of 60 Hz to 20 kHz (+/- 5 dB), input capability of 28V RMS, 86 dB sensitivity at one meter and 2V / 4 ohms [83, 167, 333, and 667 ohms] nominal impedance. The nominal dispersion shall be 90° H x 90° V from 2 kHz to 8 kHz. The loudspeaker shall be 19.5 in. (496 mm) H x 9.7 in. (247 mm) W (front) x 5.6 in. (143 mm) W (rear) x 12.3 in. (314 mm) D and weigh 24.5 lbs. (11.1 kg).

Specifications subject to change without notice.